

Half Hollow Hills Community Library Public Meeting – Listening Tour

Community Meetings

- Listening Tour
 - Saturday, July 8 at 1–3 PM (DH) OR 3:30–5 PM (M)
 - Tuesday, July 11 at 7–9 PM(DH)
- Preliminary Drawings
 - Wednesday, August 2 at 2–4 PM (DH)
- Presentation of Design
 - Wednesday, August 30 at 7–9 PM (DH)
 - Saturday, September 9 at 12–2 PM (M) OR 3–5 PM (DH)
 - Wednesday, September 20 at 10 AM–12 PM (DH)
 - Thursday, September 28 at 7–9 PM (DH)
- Bond Vote
 - Tuesday, October 3 at 9:30AM-9 PM (DH)

Invite your friends and neighbors
Stay involved!

Half Hollow Hills Community Library
The Smartest Card
Get it. Use it.

The Value of the Library

BORROW FROM THE LIBRARY vs PURCHASE/SUBSCRIBE ON YOUR OWN

Museum Pass to the Museum of Modern Art	\$0 for five people	\$25 (cost/adult) × 5
Regents Review Course	\$40/course	A private tutor averages \$185/hour
Learn on lynda.com	\$0	Basic membership \$19.99/month × 12 months
Download Magazines through Flipster	\$0	Average newsstand cost is \$3.99/issue
Babies Boogie Classes (mommy & me music class)	\$0	Music class cost is \$40 (new member fee) + \$109/month per child

The Half Hollow Hills Community Library is your GO TO place for information, education and recreation.

Did You Know?

- [20,000](#) people walked through the doors last month

Last year...

- [76,226](#) patrons used our Wi-Fi and [17,143](#) used our public computers
- More than [312,000](#) people walked through the doors
- About [40](#) different community groups use the library regularly

In the past two years...

- More than [140,000](#) people attended library events and meetings in Dix Hills



The Mothers
Club of
Wheatley
Heights, Inc



Did You Know?

To Date...

- 165 preschoolers and 690 K-5th graders registered for the Summer Reading Club
- 487 students participated in 21 Regents review classes this year

Last year...

- 9,289 people attended 496 Children's Programs
- 149 community service opportunities were offered
- 2,235 teens earned more than 44,700 community service hours



Did You Know?

577 residents have logged in to ancestry.com database in June

Last Year...

- Our Reference librarians answered more than 41,000 questions
- 6,450 residents attended fitness classes
- About 3,000 people attend special events such as The Tribunes, Memories of the King, Shredding Day, Park Day, etc.



ancestry®

IMAGINE
HALF HOLLOW HILLS
COMMUNITY LIBRARY

What Works?

What Doesn't ?

What's Missing?

Why We Need a New Library?

- Flexible public spaces
- Flood free meeting rooms
- ADA Compliance
 - Easy elevator access
 - Wider book rows
 - Modern restroom facilities
- More programming
- Fire sprinklers
- More parking
- Flood free parking
- Safe sidewalks/stairs
- More meeting rooms
- More quiet study space
- More seating for all ages
- Flexible meeting rooms
- Ability to adapt to new technology
- Room for digital makerspaces
- Room for crafts
- YOUR IDEAS HERE!!!

Meet Your Team

The Library Board of Trustees



**Maxine Roeper
Cohen**



Larry Bloomstein



Jacob Goldman



Bruce Gordon



Wayne Griffith



Peter Gisolfi

Peter Gisolfi Associates

Founding partner of a firm of architects, landscape architects, and interior designers. Projects include public libraries such as Longwood PL and Darien, CT.

<http://www.petergisolfiassociates.com>



Dominic Calgi

Calgi Construction Management

As President/CEO, Dominic provides construction management, owner's representation and consulting services to public libraries. <http://www.calgiconstruction.com>



Andrew K. Martingale

Hamburger, Maxson, Yaffe & McNally, LLP

An associate in the firm's Litigation Practice and Municipal Law Groups, he has provided counsel to the firm's clients, including libraries. <https://www.hmylaw.com>



Judith White

CJ2 Communication Strategies

As one of CJ2's founders, Judy works with some of Long Island's premier libraries.

<http://cj2.com>



Steven Cabrera & Meredith Byers

D&B Engineers & Architects P.C.

Cabrera and Byers have extensive knowledge and experience in federal, state and local environmental regulations and the process for conducting environmental reviews. <http://www.db-eng.com>



IMAGINE the Possibilities

- More parking
- Storytime room for children
- Beautiful outdoor space
- Theater for performances and lectures
- Lots and lots of meeting space
- Proper flooring for exercise
- Makerspaces and craft room for all ages
- Access to state-of-the-art technology
- And more. . . .

Melville Branch Enhancements

Half Hollow Hills Community Library - Melville Site Improvement Project



Brick Pavers



Bench



Proposed Site Plan



Site Lighting - Pole



Book Drop



Pergola - Fiberglass



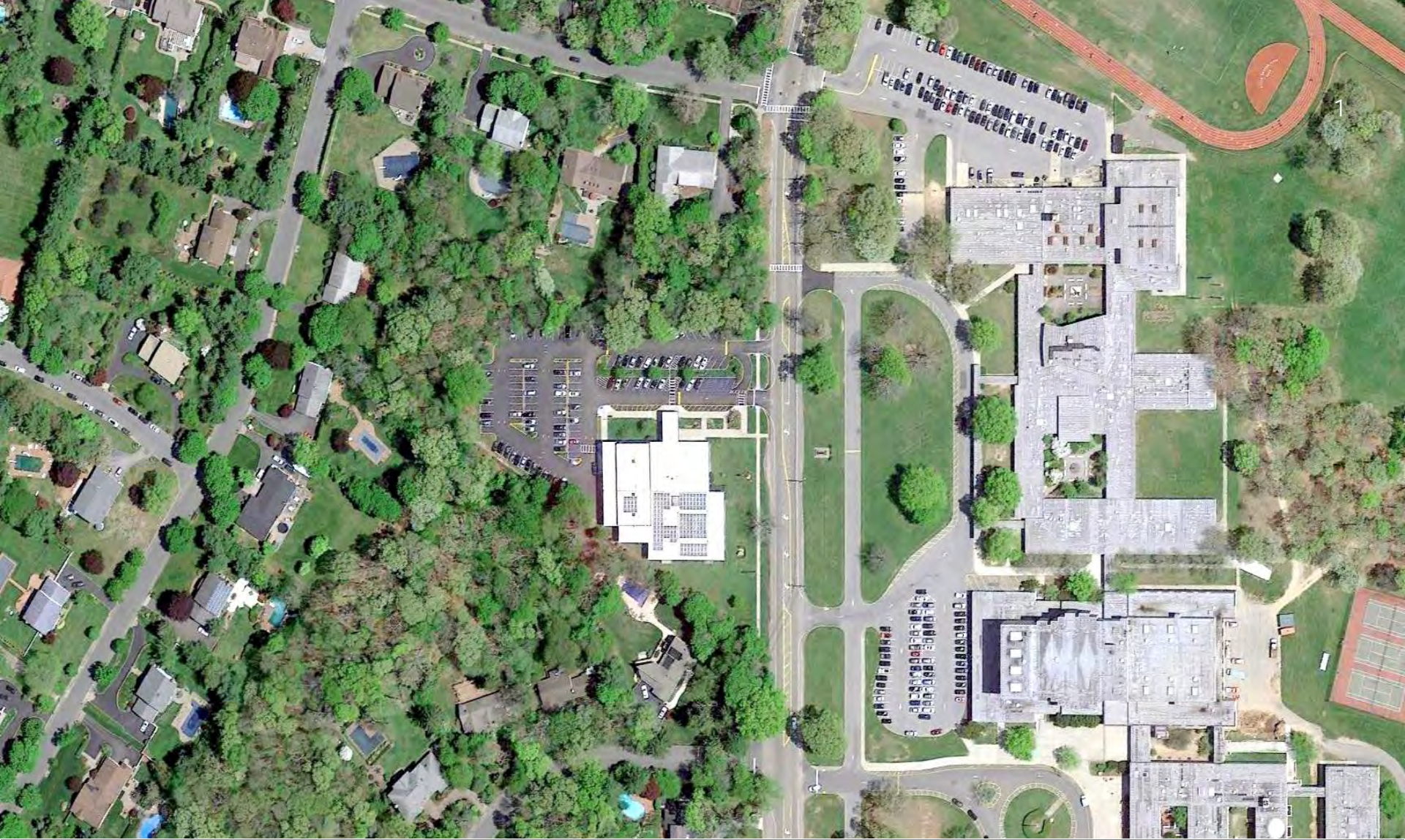
Planting Bed

John Tanzi Architect
105 North Country Road
Stony Brook, NY 11790
631-721-0008
www.jtarchitects.net

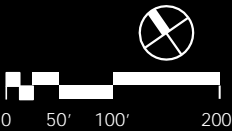
Architecture
Engineering
Interiors

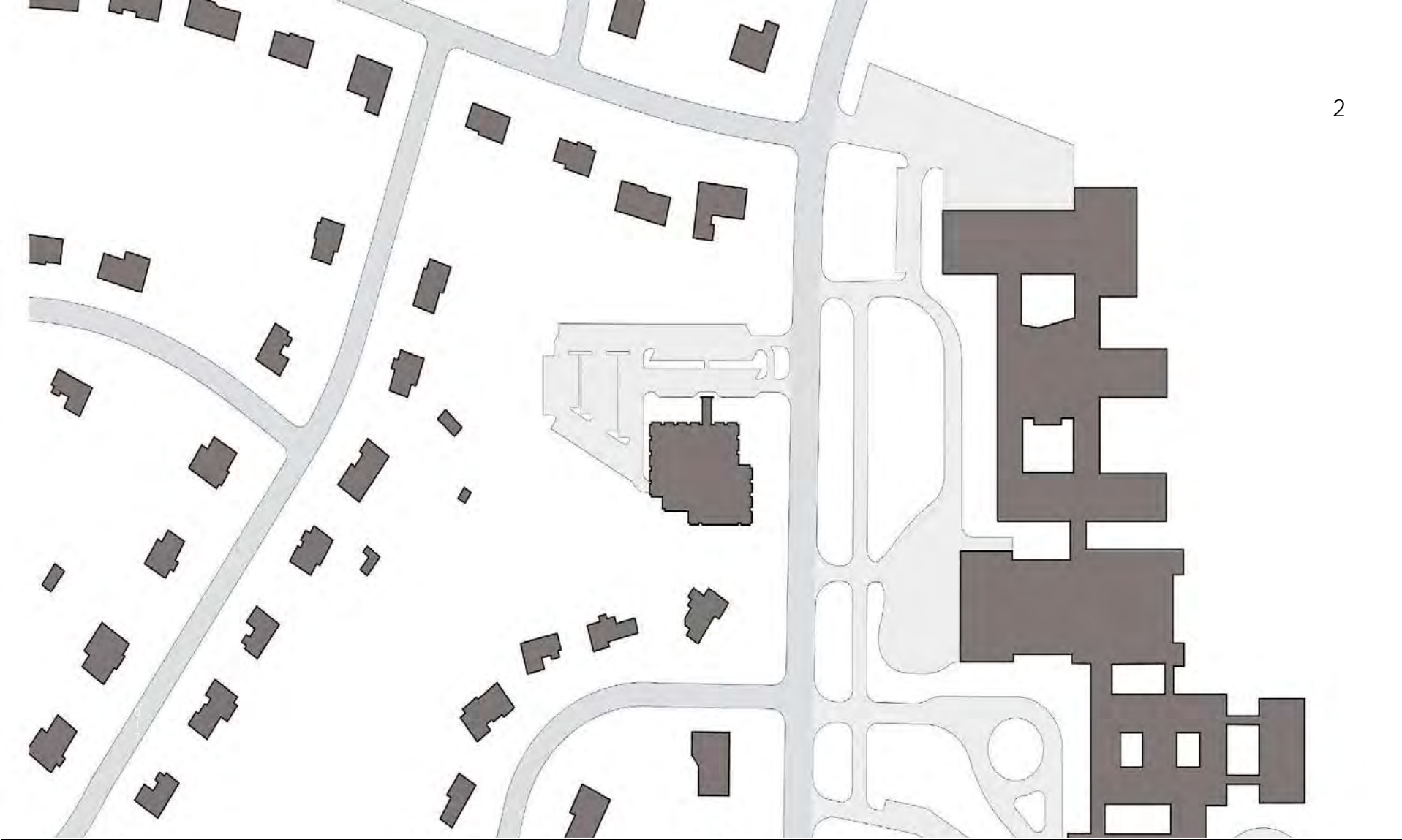


IMAGINE
HALF HOLLOW HILLS
COMMUNITY LIBRARY

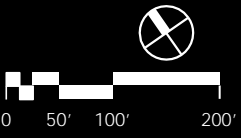


AERIAL PHOTO OF SITE AND CONTEXT
Half Hollow Hills Community Library
55 Vanderbilt Parkway, Dix Hills, NY 11746

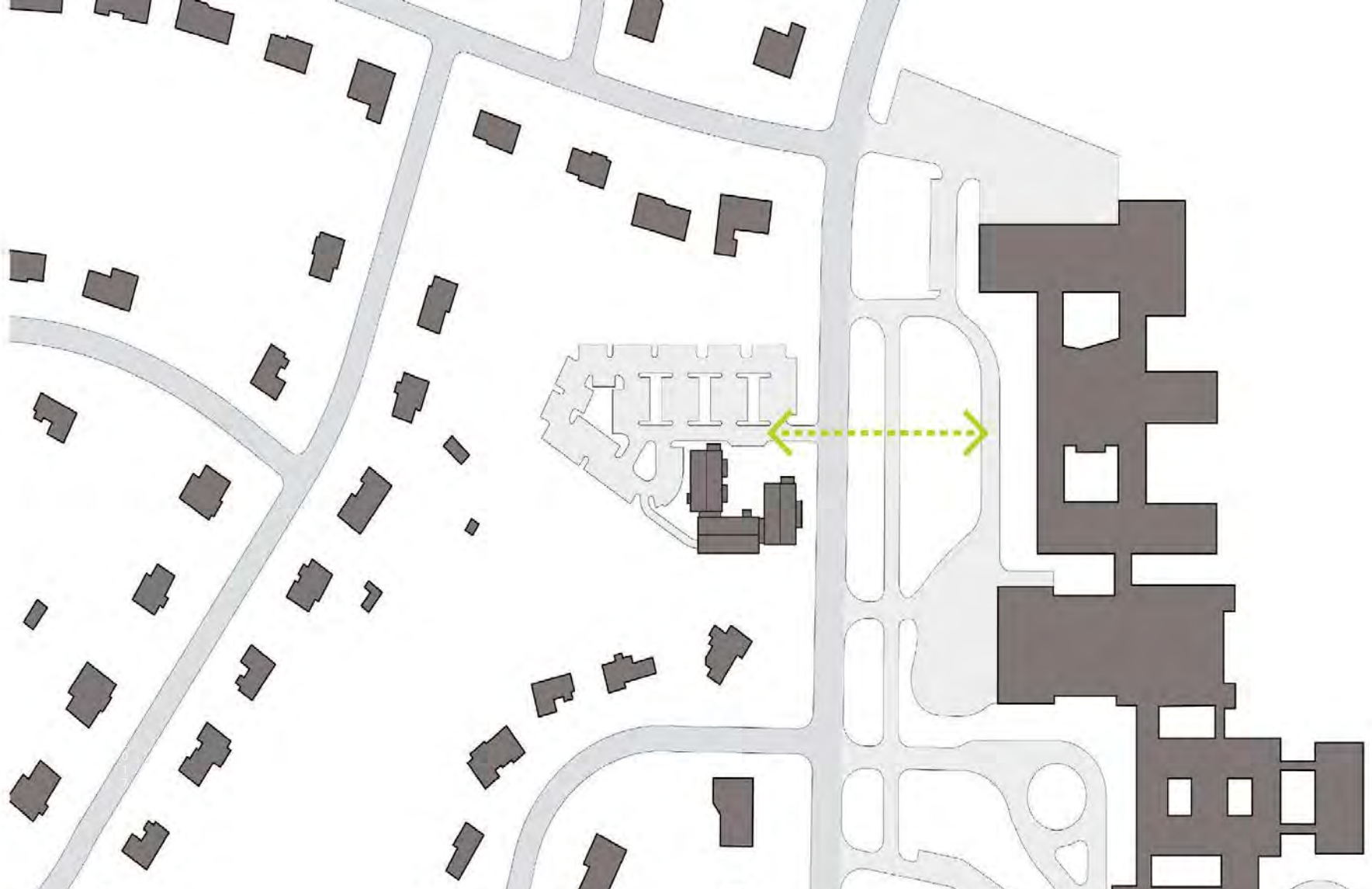




EXISTING FIGURE GROUND
Half Hollow Hills Community Library
55 Vanderbilt Parkway, Dix Hills, NY 11746



NORTH 0 50 100 200



PROPOSED FIGURE GROUND
Half Hollow Hills Community Library
55 Vanderbilt Parkway, Dix Hills, NY 11746

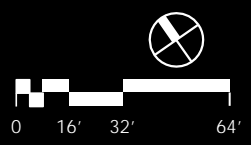


0 50' 100' 200'

NORTH 0 50 100 200






141 PARKING SPACES

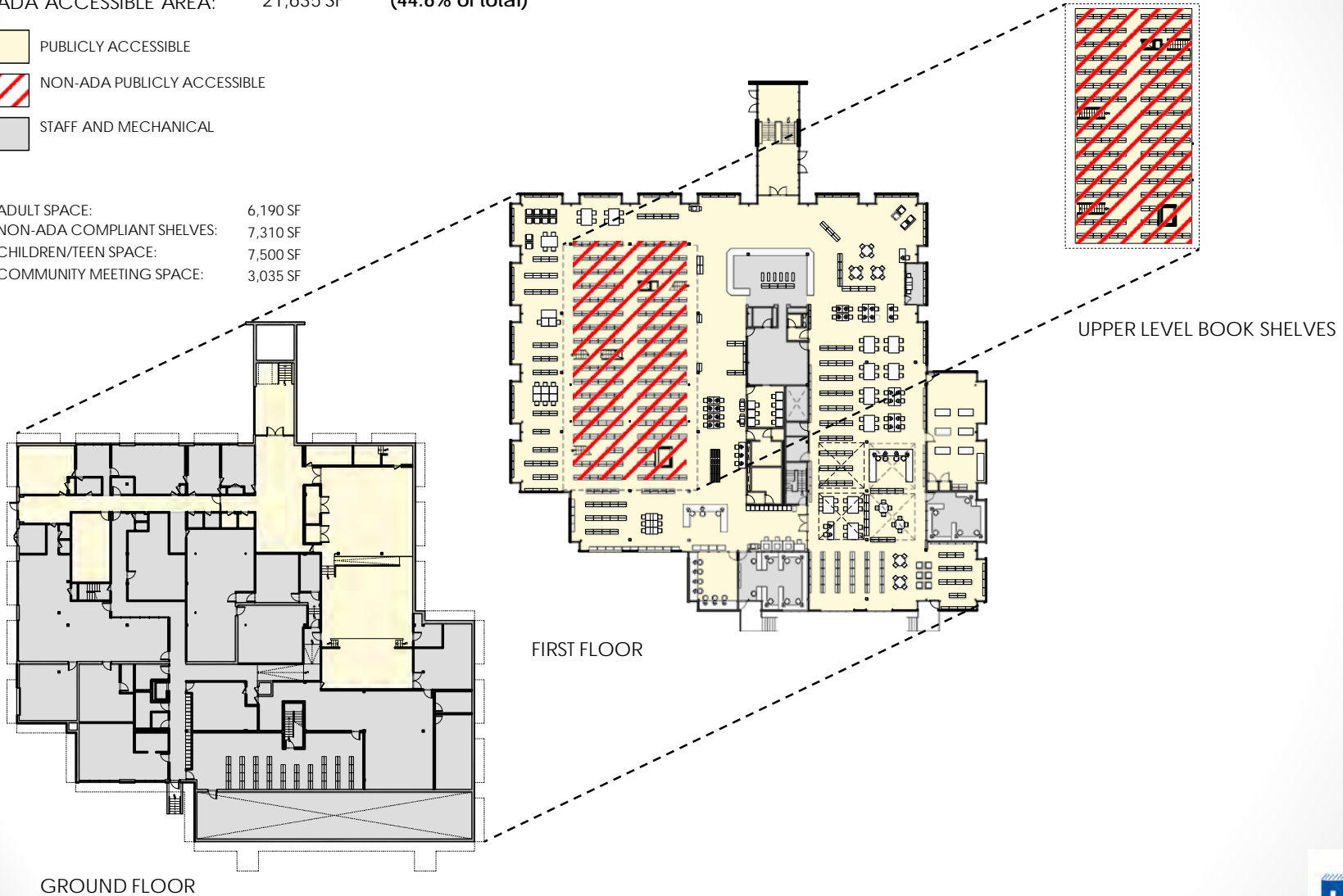


PROPOSED SITE PLAN
Half Hollow Hills Community Library
55 Vanderbilt Parkway, Dix Hills, NY 11746

TOTAL FLOOR AREA: 48,525 SF
 PUBLIC USE AREA: 28,945 SF (58.3% of total)
 ADA ACCESSIBLE AREA: 21,635 SF (44.6% of total)

-  PUBLICLY ACCESSIBLE
-  NON-ADA PUBLICLY ACCESSIBLE
-  STAFF AND MECHANICAL

ADULT SPACE: 6,190 SF
 NON-ADA COMPLIANT SHELVES: 7,310 SF
 CHILDREN/TEEN SPACE: 7,500 SF
 COMMUNITY MEETING SPACE: 3,035 SF

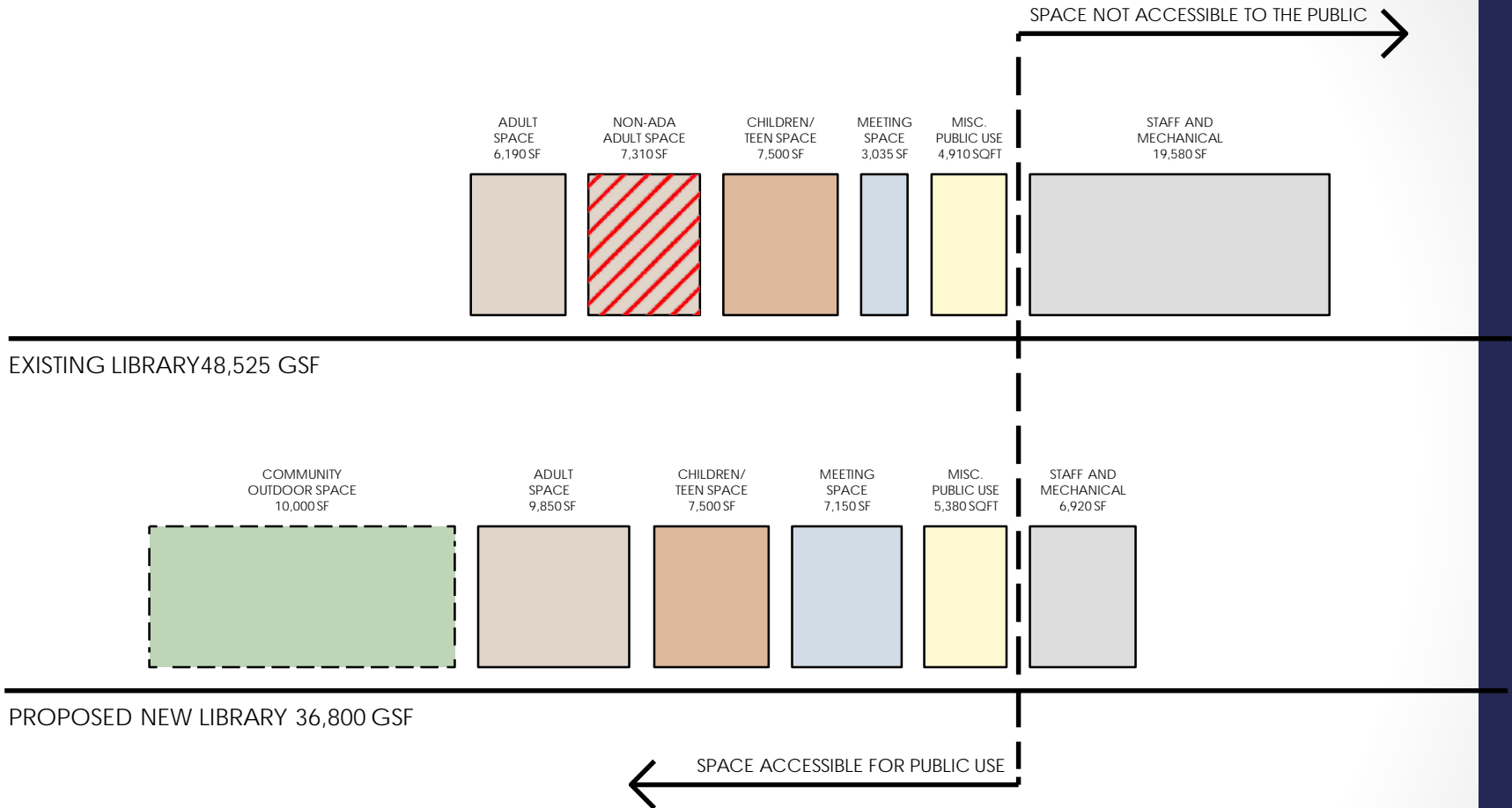


TOTAL FLOOR AREA: 36,800 SF
 PUBLIC USE AREA: 29,880 SF (81.2% of total)

- PUBLICLY ACCESSIBLE
- STAFF AND MECHANICAL
- COMMUNITY OUTDOOR SPACE

ADULT SPACE: 9,850 SF
 CHILDREN/TEEN SPACE: 7,500 SF
 COMMUNITY MEETING SPACE: 7,150 SF
 LIBRARY GREEN: 9,050 SF
 CHILDREN'S OUTDOOR PLAY: 950 SF





Proposed Project Budget

Total Project	\$19,215,513
Capital Reserve Withdrawal:	
Dix Hills	- \$3,715,513
<u>Melville</u>	<u>- \$1,000,000</u>
Library Bond	\$14,500,000

Typical Cost per household

\$3.85/MONTH FOR 20 YEARS*

*Assumes the average assessed value of \$6,000 creating a \$45/yr increase to the tax bill

Now It's Your Turn

Community Meetings

- Listening Tour
 - Saturday, July 8 at 1–3 PM (DH) OR 3:30–5 PM (M)
 - Tuesday, July 11 at 7–9 PM (DH)
- Preliminary Drawings
 - Wednesday, August 2 at 2–4 PM (DH)
- Presentation of Design
 - Wednesday, August 30 at 7–9 PM (DH)
 - Saturday, September 9 at 12–2 PM (M) OR 3–5 PM (DH)
 - Wednesday, September 20 at 10 AM–12 PM (DH)
 - Thursday, September 28 at 7–9 PM (DH)
- Bond Vote
 - Tuesday, October 3 at 9:30AM-9 PM (DH)

Invite your friends and neighbors
Stay involved!

Current Budget

Acct #	Account	Approved			Year to		Approved		% Increase	
		Budget	Actual	Over/Under	Budget	Date as of	Budget	Over/Under	16-17 to	17-18
		15-16	15-16	15-16	16-17	12/31/2016	17/18	17/18		
74693	Carting & Plowing	20,000	\$ 9,639	\$ 10,361	25,000	1,860	20,000	(5,000)	-20.00%	
74694	Custodial Serv	58,000	\$ 54,335	\$ 3,665	75,000	30,143	66,000	(9,000)	-12.00%	
74695	Bldg&Grounds Contr	34,000	\$ 30,485	\$ 3,515	34,000	14,904	34,000	-	0.00%	
74710	Auto Operation	2,000	\$ 1,220	\$ 780	2,000	1,060	3,000	1,000	50.00%	
74730	Auto Maintenance	3,500	\$ 1,828	\$ 1,672	3,500	540	3,500	-	0.00%	
	Total Other Oper	247,600	242,561	\$ 5,039	279,100	142,212	269,235	(9,865)	-3.53%	3.46%
	TOTAL OPERATING	5,187,310	4,798,267	\$ 389,043	5,300,633	2,343,417	5,287,757	(12,876)	-0.24%	
90100	NYS Pension	540,000	\$ 460,080	\$ 79,920	439,000	470,260	480,000	41,000	9.34%	
90200	MTA Payroll Tax	12,500	\$ 5,234	\$ 7,267	-	-	-	-		
90310	FICA Contribution	226,600	\$ 203,401	\$ 23,199	229,200	94,897	227,900	(1,300)	-0.57%	
90320	MC Contribution	53,000	\$ 47,596	\$ 5,404	53,600	22,622	53,300	(300)	-0.56%	
90400	Workers Comp	36,000	\$ 29,582	\$ 6,418	38,200	41,027	39,346	1,146	3.00%	
90500	Unemployment Ins	2,000	\$ -	\$ 2,000	2,000	2,000	2,000	-	0.00%	
90550	Disability Insurance	10,000	\$ 7,889	\$ 2,111	10,000	1,892	10,000	-	0.00%	
90600	Medical Ins		\$ -	\$ -						
90610	Medical Ins - Employees	572,600	\$ 497,603	\$ 74,997	586,957	295,416	675,800	88,843	15.14%	
90620	Medical Ins - Retirees	315,300	\$ 328,725	\$ (13,425)	353,455	186,975	366,661	13,206	3.74%	
90630	Medical Ins - GASB 45	238,000	\$ 238,000	\$ -	238,000		238,000	-	0.00%	
	TOTAL FRINGE	2,006,000	\$ 1,580,109	\$ 425,891	1,950,412	1,113,079	2,093,007	142,595	7.31%	27.07%
99500	Transfer to Capital	300,000	\$ 300,000	\$ -	350,000		350,000	-	0.00%	4.53%
	TOTAL	\$ 7,493,310	\$ 6,678,376	\$ 814,934	\$ 7,601,045	\$ 3,456,496	\$ 7,730,764	\$ 129,719	1.71%	100.00%

\$7,730,764

\$350,000

Loan Payment

$$P = \frac{\tau(PV)}{1 - (1 + \tau)^{-n}}$$

P = Payment

PV = Present Value

τ = rate per period

n = number of periods

PV= \$14,500,000 Bond

r= 4%

n=20 years

P=\$1,066,935.38

Increase to Budget = \$1,066,935.38 - \$350,000 = **\$716,935.38**

Est. % Increase to the Budget = \$716,935.38/\$7,730,764 = **9.27%**

~10%

How to Estimate your Share

- Babylon - <https://goo.gl/No7qXb>
- Huntington - <https://goo.gl/47r3Yj>

$\$414.75 \times 10\% = \$41.48/\text{yr}$

Tax Levy

Levy No	Levy Desc	Levy Type	Exempt	Taxable Val.	Tax Rate	Taxes
sc005	School Dist-H.H.H	School District	450	4800	209.763	\$10,068.62
ld005	Lib.Dist.-H.H. Hills	Library District		5250	7.9	\$414.75
d006	County	County District		5250	2.565	\$134.66
d008	County Police District	Police District		5250	40.717	\$2,137.64
d096	Out of County Tuition	Town District		5250	0.958	\$50.30
d007	Town/Pt.Town	Town District		5250	14.092	\$739.83
d009	Highway Tax	Highway		5250	11.127	\$584.17
d020	Lighting Dist. -Town Wide	Light District		5250	1.153	\$60.53
d005	NYS Real Property Tax Law	County District		5250	4.664	\$244.86
d022	Open Space Bonds II & III	Open Space		5250	0.463	\$24.31
d023	New York State MTA Tax	County District		5250	0.149	\$7.82
ga015	Refuse District	Special District		1	398.123	\$398.12
d037	Fd - Dix Hills	Fire District		5250	12.755	\$669.64
d066	Wd - South Dix Hills Ext.	Water district		5250	5.544	\$291.06
re010	Un-Paid Water - Dix Hills	Relevy District				\$22.00

What Happens Now?

VOTE

Tuesday, October 3, 2017

Dix Hills Building

9:30 AM – 9:00 PM